

October 20—  
November 15  
2015

A FIREHALL ARTS  
CENTRE PRODUCTION

# Chelsea Hotel

THE SONGS OF  
LEONARD COHEN



CONCEIVED AND DIRECTED BY

*Tracey Power*

MUSICAL DIRECTION AND  
ARRANGEMENTS BY  
STEVEN CHARLES



**Belfry**  
Theatre

PRODUCTION SPONSORS



MUNRO'S BOOKS



VILLA *Marco polo* INN

40TH ANNIVERSARY SEASON SPONSORS




# VOS

VICTORIA OPERATIC SOCIETY  
MUSICAL THEATRE SINCE 1945.

250.381.1021

www.vos.bc.ca

 Help us spread the word  
\*facebook.com/victoriaoperaticsociety  
@VOSlocaltheatre

MEET ME IN  
ST. LOUIS



December 4 - 13, 2015  
McPherson Playhouse

(250) 386-6121  
www.rmts.bc.ca

MEET ME IN ST. LOUIS is produced by arrangement with TAMS-WITMARK MUSIC LIBRARY, INC., 560 Lexington Avenue, New York, NY 10022.



The Belfry Theatre presents

The Firehall Arts Centre Production of  
**Chelsea Hotel**  
The Songs of Leonard Cohen

Conceived & Directed by Tracey Power  
Musical Direction & Arrangements by Steven Charles

Starring:

Rachel Aberle  
Lauren Bowler  
Steven Charles  
Benjamin Elliott  
Marlene Ginader  
Jonathan Gould

Set Designer Marshall McMahan  
Costume Designer Barbara Clayden  
Lighting Designer Ted Roberts  
Sound Designer Xavier Berbudeau  
Producer Donna Spencer  
Dramaturge James MacDonald  
Stage Manager Jaimie Tait  
Assistant Stage Manager Jillian Perry

*Chelsea Hotel* is approximately 2 hours in length, including a 15 minute intermission.

The use of video or audio recording devices is strictly prohibited at all times.

*Chelsea Hotel* is generously sponsored by

Hillside  
Printing

  
MUNRO'S  
BOOKS

VILLA *Marco Polo* INN

98.5 Ocean  
Today's the Best  
KISS 103.1  
HIT MUSIC

40th Anniversary Season Sponsors:

THRIFTY  
FOODS

TIMES COLONIST  
Your World. Your News. 2007

Cook's Day Off  
FINE FOODS & CATERING LTD.

Helijet

Public Funders:

  
THE CANADA COUNCIL  
LE CONSEIL DES ARTS  
DU CANADA  
1908 1907

  
BRITISH COLUMBIA  
ARTS COUNCIL  
An agency of the Province of British Columbia

  
BRITISH  
COLUMBIA

  
CRD  
Making a difference...together

  
THE CITY OF  
VICTORIA

The Belfry Theatre is a registered Canadian charity, 11921 5549 RR0001.

The Belfry Theatre is a member of the Professional Association of Canadian Theatres and engages under the terms of the Canadian Theatre Agreement professional artists who are members of the Canadian Actors' Equity Association.

The Belfry Theatre is a member of the Theatre Communications Group, USA., Greater Victoria Chamber of Commerce and the Professional Arts Alliance of Greater Victoria.

Please enjoy the performance.

## Belfry Theatre

Venue Technician  
Box Office/Front of House  
Box Office Clerk  
Production Manager  
Marketing & Communications  
Director  
Box Office Manager  
Box Office Clerk  
Assistant Box Office Manager  
Front of House Manager  
Executive Director  
Facilities Supervisor &  
Head Technician  
Company Manager  
Scenic Artist  
Graphic Designer  
Artistic Associate &  
Outreach Coordinator  
Belfry 101 Co-ordinator  
Box Office Clerk  
Financial Officer  
Head of Props  
Master Carpenter  
Artistic Director  
Scenic Painter/Custodian  
Technical Director  
Development Manager  
Head of Wardrobe  
Associate Artist  
Box Office Clerk  
Front of House

**Belfry Support Staff**  
B4Play Audio Technician  
Photographers

Additional Crew

**Ben Burrow**  
**Jane Broomfield**  
**Michelle Chowns**  
**Alex Currie**

**Mark Dusseault**  
**Casey Fitterer**  
**Jenny Fitterer**  
**Ian Gibson**  
**Tara Gilroy-Scott**  
**Ivan Habel**

**Keith Houghton**  
**Valerie Houle**  
**Carole Klemm**  
**Jeff Kulak**

**Erin Macklem**  
**Dave Morris**  
**Kate Loomer**  
**Patricia O'Brien**  
**Peter Pokorny**  
**Dale Pudwell**  
**Michael Shamata**  
**Lara Shepard**  
**Gregory Smith**  
**Susan Stevenson**  
**Joanne Stichbury**  
**Deborah Williams**  
**Eryn Yaromy**  
**Golnaz Zad**

**Ben Brysiuk**  
**David Cooper**  
**Jo-Ann Richards**  
**Peter Pokorny**

**Nicole Lamb**  
**Craig Alfredson**  
**Carolyn Moon**  
**Nick Heffelfinger**  
**Sara Robb**

## Board of Directors

President **Helen Lansdowne**  
Vice President **Dr. Monty Bryant**  
Secretary **Georgia Gibbs**  
Treasurer **Robert Thomson, CA**  
Directors **Gloria Back**  
**Dr. Andrew Karwowski**  
**Joan Peggs**  
**Andy Stephenson**  
**Bob Tyrrell**  
**Roshan Vickery**

## Honorary Board of Directors

Chair Emeritus **Patrick Stewart**  
**Sherri Bird**  
**Barbara Greeniaus**  
**Robert Johnston Q.C.,**  
**John Keay**  
**Joan Snowden**  
**Dr. Brian Winsby**  
**Michael Ziegler**

Belfry Theatre  
1291 Gladstone Avenue  
Victoria, British Columbia  
Canada, V8T 1G5  
250-385-6815 Box Office  
250-385-6835 Administration  
250-385-6336 Facsimile  
www.belfry.bc.ca  
Charitable donation number  
11921 5549 RR0001

## Programme Advertising

Design and Production  
Victoria Arts Marketing  
P.O. Box 8629  
Victoria, BC V8W 3S2  
250.382.6188  
Email: vicarts@vicarts.com  
www.vicarts.com  
Publishers **Philomena Hanson**  
**Paul Hanson**  
Design/Production **Lyn Quan**

**S**  **T A G E**

SMALL PLATES WINE BAR

Voted Victoria's number  
one restaurant by  
Vancouver Magazine!  
'It's what you deserve'

250.388.4222  
info@stagewinebar.com

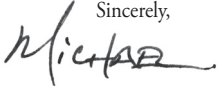
## Artistic Director's Notes

Our season of celebration continues! What a thrill to welcome you to this acclaimed production from our colleagues at the Firehall Arts Centre in Vancouver. And what a thrill to welcome this stylish show to the Belfry! Almost everyone involved in *Chelsea Hotel* is making their Belfry debut – their long overdue Belfry debut.

This run at the Belfry is the beginning of *Chelsea Hotel's* second national tour, which will include its third run at the Firehall. To call this show a success story would be an understatement. Congratulations to Tracey Power, Steven Charles and the cast – most of whom have been with the show since its inception.

How lucky we are to be part of a country and a world where Leonard Cohen's songs have insinuated themselves into our lives. This is the second Cohen-inspired show in this theatre's 40 year history. Eighteen seasons ago, Bryden MacDonald created for the Belfry a new production of *Sincerely, A Friend*, his theatrical tribute to the great man's words and music. That show was a great success with Belfry audiences, and I have no doubt that this one will be too.

Revel in the iconic songs of Canada's renowned singer, songwriter and poet.

Sincerely,  




## Notes from the Executive Director

I'll start with a slightly out of context partial quotation from Cohen's *Book of Longing*; the Belfry has "... followed the course

From chaos to art"

The course for the Belfry has been one of a very long series of successes with the odd interruption from time to time. From the chaotic halls of our providential shared accommodation with Cool-Aid Society, to an outstanding repurposing of this heritage church into a superlative theatre complex, this first part of our journey has been remarkable. Our beautiful home owes much to everyone who has crossed its threshold and who has continued to believe and support it: actors, designers, volunteers, donors, subscribers, single ticket buyers, current and past staff, and any other of the thousands of people who have entered this theatre. Each of these friends has been a building block in making us an edifice of art that is recognized nationally for its excellence and for its long history of support of Canadian theatre artists.

It seems fitting that we celebrate this anniversary and the Belfry's dedication to Canadian artists with our Canadian master of song. Enjoy and thank you all.



# THE FERNWOOD INN

## WEEKLY SPECIALS

### *Tuesdays*

#### **burger & beer \$10.95**

*Fully loaded bacon cheddar burger  
or our famous veggie burger  
with a pint of Fernwood Lager*

### *Thursdays*

#### **wing night \$5.99** after 8pm

*Roasted garlic & honey,  
Frank's hot or whiskey barbeque*

### *Saturdays & Sundays*

#### **brunch on the weekends**

11:30am - 2pm

**PLUS....try our NEW  
amazing menu items**

#### **RESERVATIONS:**

250 412 2001

#### **HOURS:**

TUESDAY ~ SATURDAY

11:30am - 12 midnight

SUNDAY ~ MONDAY

11:30am - 10:00pm

Children welcome!

## Audience Information

### Cellphones & Pagers

Please turn off your cellphones and pagers when you enter the theatre. If you need to be contacted in an emergency, please leave your name and seat number with our House Manager.

### Latecomers & Re-admission

The Director of each production designates moments in the show when the seating of latecomers will cause the least amount of distraction for actors and audience members. Should you leave the theatre, our House Manager will not be able to reseat you until one of these breaks.

### Babes in Arms

The Belfry is proud to produce adult contemporary theatre. Our productions are not suitable for children 10 and under, including babes in arms.

### Recording Devices

No cameras or recording devices are permitted in the theatre.

### Audience Advisories and Running Times

We make every effort to advise you of strong language, subject matter or extreme technical effects (strobe lights, fog). Please look for signs at the entrances to the theatre. Advisories and running times are available at the Box Office as of the first preview.

### Food & Drinks

Please feel free to take only food and/or drinks you've purchased from the Belfry bar into the theatre. Our goodies are packaged so that they don't make a lot of noise and disturb your fellow audience members.

### Perfume & Cologne

Please refrain from using perfume and cologne when you come to the theatre. Some of our patrons are highly allergic to scents.

### Electronic Cigarettes

Please refrain from using electronic cigarettes in the theatre, to avoid distraction for other patrons and the Artists on stage.

Thank you for your consideration.  
Enjoy the performance.

## Director's Notes



Creating a new piece of theatre is such a rewarding and exhilarating experience. When the piece being created is brought to life through the lyrics and poetry of Leonard Cohen, creative inspiration is limitless. Much in the same way Cohen uses words to paint a poetic picture, I used his songs as inspiration to paint a theatrical one. Thank you to Donna Spencer for her belief and guidance, to Steven Charles for his musical brilliance and partnership, to James MacDonald for his influence and heart, and to this incredible company who joined me for this creative journey with such trust, passion and artistry. This is a story of love, of pain, of artistic struggle that begins and ends with Cohen's words but lives within us. I invite you to lose yourself in our world and feel Cohen's songs once again, for the very first time. A special thank you to Michael Shamata for bringing this show to the Island and continuing its journey. I can't wait to share it with my wonderful family and friends, some of whom must wonder what the heck I do for a living. Enjoy!

Tracey Power

## From the Firehall's Artistic Producer



I would like to thank the Belfry Theatre for bringing our production to Victoria and for being part of our 2015-2016 tour. *Chelsea Hotel The Songs of Leonard Cohen* premiered at the Firehall Arts Centre in 2012 and since then has played over two hundred performances in Vancouver, Saskatoon, Winnipeg and Calgary. Following its run in Victoria, the production will tour to Vernon, Banff, Fort McMurray, New Westminster, Vancouver for Christmas and then on to Edmonton and Toronto. We hope you enjoy the show and go home humming to Cohen's popular tunes.

Donna Spencer

## About the Firehall Arts Centre

The Firehall Theatre Society, a not-for-profit charitable organization, operates the 155-seat Firehall Arts Centre in a 108-year-old heritage fire hall in downtown Vancouver. The Society's mission is to entertain and engage audiences through the development, production and presentation of high quality theatre, dance, inter-disciplinary performance and visual arts exhibitions which are culturally inclusive and reflective of the Canadian experience. For additional information about the Society's activities, please visit our website at [www.firehallartscentre.ca](http://www.firehallartscentre.ca)

The Firehall gratefully acknowledges our sponsors:



**THE THREEPENNY OPERA**

NOVEMBER 5-21, 2015

*An irreverent Opera for Nihilists.*

BY BERTOLT BRECHT  
MUSIC BY KURT WEILL  
DIRECTED BY BRIAN RICHMOND

PHOENIX THEATRE @ UVIC

250.721.8000 | [PHOENIXTHEATRES.CA](http://PHOENIXTHEATRES.CA)

ARTISTIC DIRECTOR  
Timothy Vernon

PACIFIC  
**Opera**  
VICTORIA

Patrick Corrigan  
EXECUTIVE DIRECTOR

# Mary's Wedding

A Canadian opera about love and war –  
An invitation to remember our past

**Special public performance**

**Tuesday, November 10th at 7:00 pm**

**Victoria High School Theatre, 1260 Grant Street**

Directed by Glynis  
Leyshon and designed  
by Ian Rye, this exciting  
new production is designed  
to create a theatrical opera  
experience in CRD high  
schools in time for  
Remembrance Day.



Music by Andrew P. MacDonald  
Libretto by Stephen Massicotte

**Tickets \$35 adults / \$15 students**

Available from the POV box office: **250.385.0222**

[www.pov.bc.ca/maryswedding.html](http://www.pov.bc.ca/maryswedding.html)

# Melina Boucher

RESIDENTIAL PROPERTIES  
NEWPORT REALTY LTD



Providing a complimentary marketing package. So your home will be presented at its finest.  
Staging, Photography, HD Video Tours, Floor Plans, Brochures, Print & Web Marketing.  
View a listing presentation at [MelinaBoucher.ca](http://MelinaBoucher.ca)



**Sold!** Fairfield Condo on Moss Street



**Sold!** Fairfield Character Town House



**Sold!** Gordon Head Family Home



## Acting Company



Rachel Aberle



Lauren Bowler



Steven Charles

### Rachel Aberle

#### *Performer*

Rachel is delighted to be back at the *Chelsea Hotel* and to be making her Belfry début. Rachel was last seen in Victoria on the grass just outside, as Kathy in Theatre SKAM's *Smalltown: A Pickup Musical*. Elsewhere in this beautiful country of ours, Rachel has appeared at Summerworks Musical Works in Concert (Toronto), Caravan Farm Theatre (Armstrong), Chemainus Theatre Festival (Chemainus), Persephone Theatre (Saskatoon), Manitoba Theatre Centre and Prairie Theatre Exchange (Winnipeg), and The Arts Club, Vancouver Playhouse, Only-Child Collective, Miscast Collective and Green Thumb Theatre (Vancouver). Off stage, Rachel works as a voice-over artist, playwright and arts administrator. Her play *Still/Falling*, which tackles teen depression, will be produced this year by Green Thumb Theatre, where she also works as the Community Engagement and Development Coordinator. Rachel wishes to thank Green Thumb for being the kind of

supportive workplace that says yes when she bashfully asks if she can take 5 months off to travel the country playing Leonard Cohen music.

### Lauren Bowler

#### *Performer*

Lauren is having a ball galivanting around the country with this production, having recently returned from Winnipeg and Saskatoon. Recent theatre credits: *White Christmas*, *High Society* (Jessie Award nomination), *Blood Brothers*, and *Gypsy* (all for Arts Club Theatre), *Seussical* (Carousel Theatre for Young People), *Fiddler on the Roof* (Western Canada Theatre), *Chelsea Hotel* (Firehall Arts Centre), *The Drowsy Chaperone* (Vancouver Playhouse, Citadel Theatre, National Arts Centre), *{title of show}* (Homeshark Equity Co-op), *Guys and Dolls* (Manitoba Theatre Centre, Citadel Theatre, Theatre Calgary). Lauren sings with Famous Players Band and co-owns the Great Wall Tea Company. Enjoy the show!

### Steven Charles

#### *Musical Director, Arranger & Performer*

Steven Charles is a musician, composer and performer from Vancouver. Highlights of the past few years include: *Urinetown* at the Firehall, *Avenue Q* at the Arts Club, *Brief Encounter* at the Playhouse/MTC, *Dance Marathon* by Bluemouth Inc. (international tours), *Salmon Row* at Mortal Coil, and many Folk, Fringe, and Jazz Festivals across Canada, the U.S., and Europe. He was MD for *Galala* on TV Unis and annually MD's *Pacifique en Chanson*. With the Escape Artists he co-produced *Miss Shakespeare* and *J. Caesar*, and he co-created and continues to perform in productions of *Chelsea Hotel* in theatres across Canada. He tours internationally with bands Viper Central and The Fugitives, and is very active in Vancouver's music scene. He is in demand as a multi-instrumentalist, sound designer and for his easy going versatility. [www.stevenjohncharles.com](http://www.stevenjohncharles.com)

# Cook's Day Off

FINE FOODS & CATERING LTD.

*Make Life Easy with  
Our Delicious Services!*

- Catering for Every Occasion
- Fantastic Menu Selection
- Ready-made and Frozen Meals  
Perfect for New Moms, Seniors,  
and Busy People in a Hurry
- Cozy Full Service Dine-in Cafe
- Take Out & Delivery Available

*Make Life Easy!*  
Call 250-598-3228

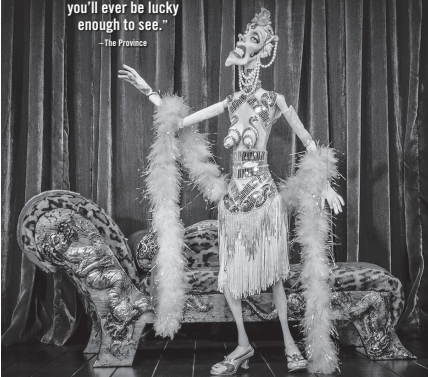
1883 Fort Street across  
from Royal Jubilee Hospital  
For more info visit [www.cooksdayoff.ca](http://www.cooksdayoff.ca)

INTREPID THEATRE PRESENTS

## RONNIE BURKETT THEATRE OF MARIONETTES THE DAISY THEATRE

"Some of the funniest,  
most brilliant theatre  
you'll ever be lucky  
enough to see."

—The Province



**NOVEMBER 19-22, 8PM**  
The Metro Studio 1411 Quadra Street

Tickets \$38 in advance, \$40 at door | [ticketrocket.co](http://ticketrocket.co) | 250-590-6291  
[intrepidtheatre.com](http://intrepidtheatre.com)

Music by John Alcorn

Co-commissioned by LUMINATO (Toronto, Canada) and the Centre for the Art of Performance at UCLA (Los Angeles, USA). This production is intended for adult audiences.

**A R T**  
GALLERY

OF GREATER VICTORIA

Experience the  
thought provoking,  
boundary pushing  
works of **Anna  
Banana** and her  
collaborators.

IN PARTNERSHIP WITH  
**OPENSOURCE**



AGGV.CA



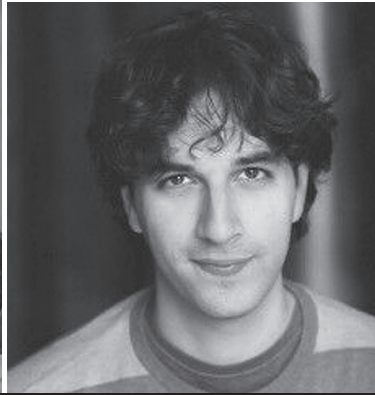
## Acting Company



Benjamin Elliott



Marlene Ginader



Jonathan Gould

### Benjamin Elliott

#### *Performer*

Ben is an actor and composer based in Vancouver. Recent credits include *Are We Cool Now?* (WCT), *Comedy Of Errors* and *Love's Labour's Lost* (Bard On The Beach) for which he was also the Musical Director. He is the co-writer of *The Best Laid Plans: A Musical*, which premiered this fall and the in-house composer for the sketch comedy show *Human Town*, which is in its first season on CBC television. Coming up, Ben will be appearing in *Good People* (Arts Club) at the Stanley Theatre in Vancouver and then heading back to Bard On The Beach where he will be performing in *Romeo and Juliet* and *The Merry Wives Of Windsor* (Ontario). Ben is a Jessie Richardson Award recipient and graduate of Studio 58. [www.benelliott.ca](http://www.benelliott.ca)

### Marlene Ginader

#### *Performer*

Marlene hails from Brandon, Manitoba where she grew up dancing and playing the violin. She then gave it all up permanently to become a serious actress. Turns out life is hilarious. She is delighted to be hitting the road again with the *Chelsea* crew. Select credits include *Buddy: The Buddy Holly Story* (Arts Club Theatre), *Pharaoh Serket and the Lost Stone of Fire* (Carousel), *Tough!* (Twenty-Something Theatre), *Tiny Replicas* (Zee Zee Theatre). Marlene is a graduate of Studio 58. [www.marleneginader.com](http://www.marleneginader.com)

### Jonathan Gould

#### *Performer*

After graduating from the University of North Carolina School of the Arts with a BFA in Classical Theatre, Jonathan has gone on to perform across North America, including Shaw Festival, Stratford Festival, Grand Theatre, Citadel Theatre, Soulpepper Theatre, Theatre New Brunswick, St. Lawrence Shakespeare Festival, Magnus Theatre, Lincoln Center Institute and The Kennedy Center. Past film and TV credits include *Buck Calder Experience*, *Beyblade*, *Budrus and Baby Brain*. Jonathan is also a singer, songwriter and musician based in Toronto and was a contributor to the Juno Award winning album *Music Soup*. He currently voices the role of Dave in the animated series *Scaredy Squirrel* for YTV and the Disney Channel.

The Civic Orchestra of Victoria and  
Victoria Gilbert & Sullivan Society  
present

**LIVE TO DREAM**

[www.victoriahospice.org/events](http://www.victoriahospice.org/events)

**A benefit  
concert for  
Victoria  
Hospice**

**Sunday,  
November 22  
2pm  
University of Victoria  
Farquhar Auditorium**

# Cheminus

Theatre Festival

Coming up

## Grace & Glorie

By Tom Zeigler

Oct 16 - Nov 7



## Elf The Musical

Book by Thomas Meehan and Bob Martin

Music by Matthew Skar

Lyrics by Chad Beguelin

Nov 20 - Dec 31



## Gift Certificates

available in any denomination

## Luxurious Theatre Getaways

dinner, theatre, accommodations & breakfast  
from \$128 per person

## 2016 SEASON TICKETS ON SALE SOON!

1.800.565.7738 | [chemainustheatre.ca](http://chemainustheatre.ca)

## Creative Team



Tracey Power



Marshall MacMahan



Barbara Clayden



Ted Roberts

### Tracey Power

*Director, Choreographer  
& Concept*

Born and raised in the Comox Valley, Tracey is so happy to be bringing Chelsea Hotel home to the Island. She was last here directing and choreographing *Singin' in the Rain* for the Chemainus Theatre Festival. Also an actor and writer, Tracey recently premiered a new musical *Miss Shakespeare* for Musical Theatre Works in Vancouver, and workshoped a new play, *Glory*, based on the Canadian Women's hockey team, the Preston Rivulettes, for the Citadel Theatre in Edmonton. Acting credits include *Clybourne Park* and *Blackbird* (Citadel Theatre), *La Cage Aux Folles* (Vancouver Playhouse), *Urinetown* and *The Ecstasy of Rita Joe* (Firehall), *I Love You, You're Perfect, Now Change*, *The Back Kitchen* (Arts Club), *A Midsummer Night's Dream* and *Henry V* (Freewill Shakespeare Festival). She is the recipient of the Sterling Haynes and Jessie Richardson awards for her work and has played theatres across Canada and internationally.  
[www.traceypower.ca](http://www.traceypower.ca)

### Marshall MacMahan

*Set Designer*

Marshall's designs have been seen around Vancouver and across the country, including *Love's Labour's Lost* and *Shakespeare's Rebel* (Bard on the Beach), *Spamalot* and *Avenue Q* (Arts Club), *All the Way Home* (Electric Company) and many more productions with Caravan Farm Theatre, Chemainus, Gateway, Green Thumb, Urban Ink, and others. Last season, Marshall was the Resident Associate Designer with Pacific Opera Victoria. He is a member of Associated Designers of Canada, a graduate of UBC, and the recipient of a Jessie Award, three Ovation Awards and the Vancouver Mayor's Arts Award.

### Barbara Clayden

*Costume Design*

Barbara Clayden has been a theatre artist for over 30 years, designing costumes and sometimes sets for various theatre and dance companies around Vancouver, including the Arts Club Theatre, Blackbird Theatre, Carousel Theatre, the Firehall Arts Centre, Newworld

Theatre, Presentation House, Pi Theatre, Rumble, and Theatre Replacement. She has been nominated for numerous Jessie Awards and won a few along the way. Most recently, her work was seen in Pi Theatre's production of *Except in the Unlikely Event of War* and the Arts Club's *The Odd Couple*.

### Ted Roberts

*Lighting Design*

Past designs for the Firehall Arts Centre include: the set for *Urinetown*, set and lighting for *Menopositive the Musical*, and the lighting for *Larger Than Life*. As Resident Designer for the Arts Club Theatre, recent designs include sets for *Disgraced*, *Les Miserables* and *In the Heights* at the Stanley Industrial Alliance Stage, sets for *The Mountaintop* and *It's Snowing on Saltspring*, and set and lighting for *The Red Rock Diner* at the Granville Island Stage, the set for *Sister Judy* and lighting for *A Twisted Christmas Carol* at the Revue Stage and for Persephone Theatre the lighting for *My Chernobyl* and *Hedda Gabler*.

blue bridge **ROXY**  
*at the*

returns with  
**Refreshing  
Summer Theatre**



**1 Long Day's  
Journey Into  
Night**  
by Eugene O'Neill  
May 12 - 22, 2016

**2 The Importance  
of Being Earnest**  
by Oscar Wilde  
July 5 - 17, 2016

**3 Animal Crackers**  
by George S. Kaufman  
& Morrie Ryskind  
August 2 - 14, 2016

**Buy a Blue Pass & Save 20%**  
Available @ Ticket Rocket.Co  
or call 250.590.6191



**LANGHAM  
★ COURT ★  
THEATRE**

**NOV 18 – DEC 5, 2015**

**DOUBT, A PARABLE**

A DRAMA BY JOHN PATRICK SHANLEY  
DIRECTED BY DON KEITH

*illusivue truth & consequences*

**250.384.2142 langhamtheatre.ca**



**BERWICK**  
RETIREMENT COMMUNITIES



At Berwick Retirement Communities, you will enjoy an unparalleled standard of living at a superior value. Berwick offers all the comforts of home with the amenities and hospitality you come to expect from resort style living. Find out more about The Berwick Way™.

**Visit [BerwickRetirement.com](http://BerwickRetirement.com)**

**Berwick Royal Oak: 4680 ELK LAKE DR., VICTORIA | 250.386.4680**  
**Berwick House: 4062 SHELBOURNE ST., VICTORIA | 250.721.4062**

## Creative Team



Xavier Berbudeau



James MacDonald



Jaimie Tait



Jillian Perry

### Xavier Berbudeau

#### *Sound Design*

Xavier Berbudeau is a Vancouver-based sound engineer and designer with over 15 years of experience in the industry. He has worked with many organizations over the years including Chutzpah! Festival, French Festival, music festivals and corporate events. He runs Xavier Berbudeau Audio, a Vancouver-based audio company that provides audio services and production management for live music events and corporate organizations.

### James MacDonald

#### *Dramaturge*

As a dramaturge, director and actor, James has been involved in the development of over 40 new Canadian plays, including directing the world premieres of *Vimy* (Citadel Theatre), *With a Twist* (Lunchbox Theatre) and *The Myth of Summer* (Alberta Theatre Projects). Other directing credits include *A Few Good Men* (Manitoba Theatre Centre), *Julius Caesar* (Stratford Festival), *The Old Ladies*

(Shaw Festival), *Fire* (Canadian Stage), and 12 productions at Edmonton's Citadel Theatre, where he is Artistic Associate. James is the founding artistic director of Edmonton's Freewill Shakespeare Festival, a position he held for six years. He is currently the Program Director for the Citadel/Banff Centre Professional Theatre Program.

### Jaimie Tait

#### *Stage Manager*

Jaimie has spent the last year living and working in St. John's, Newfoundland. She is very happy to be back working on *Chelsea Hotel*. Favourite past credits include *All the Way Home* (The Electric Company), *Snowman* (Rumble Productions), *KISMET one to one hundred* (The Chop) and *Leading Ladies* (The Gateway Theatre). Upcoming, Jaimie will be stage managing the world premiere of *Ours for Opera* on the Avalon back in St. John's. Jaimie is a graduate of Studio 58.

### Jillian Perry

#### *Assistant Stage Manager*

Jillian has been the Assistant Stage Manager for *Chelsea Hotel* for the past 4 years. Last January she got the opportunity to Stage Manage it for the High Performance Rodeo in Calgary. Past Assistant/Stage Management highlights include *PROUD* and *Urinetown: The Musical* (Firehall Arts Centre), Jessie Award Best Small Theatre production winner *Terminus* and *Visions of Vancouver* (PI Theatre), *My Funny Valentine*, *Nelly Boy* and *Whale Riding Weather* (Zee Zee Theatre), *Home Coming King* and *Tiny Replicas* (Below 0).



Best wishes to the entire  
Belfry Theatre community.

*Proud to support a 40-year  
legacy of live theatre*

**QUEENSBURY**  
Securities Inc.  
778.430.5808

**Carolann Steinhoff** • Portfolio Manager & Senior Vice-President



**Like A Bird On A Wire...**

**We celebrate  
the brilliant songbook  
of Leonard Cohen.**

**Hillside**  
Printing

3050 Nanaimo Street, Victoria, BC  
Ph: (250) 386-5542 • Fx: (250) 386-7838  
sales@hillsideprinting.com www.hillsideprinting.com

**entertain**  
with ease

View our selection of  
irresistible options at  
[thriftyfoods.com/entertain](http://thriftyfoods.com/entertain)

Order by phone:  
**1.800.667.8280**

Please note that for online orders we require  
48 hours notice and 24 hours notice for  
phone orders for our platters & trays.

Proudly supporting the Belfry Theatre's  
40<sup>th</sup> Anniversary Season as partners  
for over 20 years!

**THRIFTY**  
**FOODS**<sup>TM</sup>



2015/16 DINNER SHOW SEASON

# GUESS WHO'S COMING TO DINNER?

## Almost Johnny Cash WITH DAVID JAMES & BIG RIVER

FRIDAYS & SATURDAYS  
OCTOBER/NOVEMBER

Dinner Show season returns to the Oak Bay Beach Hotel as we launch with the thrill of an authentic "Man In Black" show featuring the stories and music of Johnny Cash, paired alongside a gourmet three-course themed menu.



## A Crooner's Christmas

SELECT DATES IN  
DECEMBER

Join rising star Kristina Helene and surprise guests as they lovingly recreate the sounds of Christmas past with the holiday hits from Frank Sinatra, Brenda Lee, Dean Martin, Marilyn Monroe, Elvis and other great stars. It is the perfect way to find your Christmas Spirit and start your holidays with a smile and a song.



### INDIVIDUAL TICKETS | \$89<sup>pp</sup> + tax

Enjoy a delicious served three course meal consisting of a starter, entrée and dessert in the beautifully appointed David Foster Foundation Theatre.

BOOK YOUR TICKETS AND PACKAGES  
IN PERSON, BY PHONE OR ONLINE

**OAKBAYBEACHHOTEL.COM**

📞 250.598.4556 | 1175 BEACH DRIVE - VICTORIA, BC

**OB**

OAK BAY  
BEACH HOTEL



Proud to support  
the performing  
arts.

We are working  
together with the  
Belfry Theatre to  
make a difference  
in our communities.

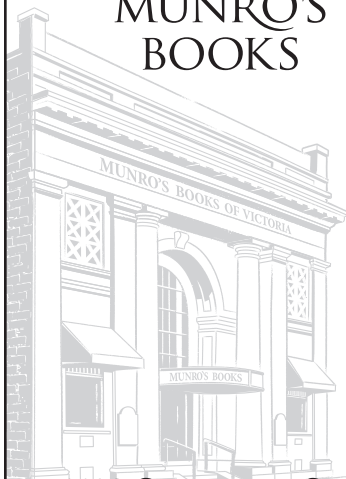


© The TD logo and other trade-marks are the property of  
The Toronto-Dominion Bank.

M05234 (0314)



MUNRO'S  
BOOKS



1108 Government Street

[munrobooks.com](http://munrobooks.com)



University  
of Victoria

University Centre  
Farquhar Auditorium

Seek culture, creativity, community.  
Find it at the Farquhar Auditorium

## The Comic Strippers



*Male strippers parody and improv comedy.  
No nudity, just extreme hilarity, 18+*

**November 14, 7:30pm**

[tickets.uvic.ca](http://tickets.uvic.ca) • 250-721-8480



/UVicFarq



@UVicFarquhar

## Wingfield's Flashback

*Audience favourite Rod Beattie looks back at some of his favourite Belfry moments*

by John Threlfall

Walt Wingfield and the Belfry seem to go together like Shakespeare and the Globe. Too vaunted a comparison? Perhaps, but keep two things in mind: the *Wingfield* series, written by Dan Needles and performed by Rod Beattie, holds the record as the best-selling, longest-running, one-man show in Canadian theatre history; and the *Wingfield* series owes much of its initial success to the Belfry... and vice-versa.

"We did a short, self-produced run of the first show, *Letters From Wingfield Farm*, at Toronto's Tarragon Theatre in the summer of 1985," recalls Beattie with a dry chuckle. "It was a six-week run that thousands and thousands of people didn't come to."

One of the people who did come, however, was then-Artistic Director Miles Potter – the first person to recognize the show's potential and see it as a solution to the Belfry's ailing finances. "It turned out to be a big success," says Beattie. "We had a four-week run and it just went through the roof. In fact, it sold more than 100 percent, because they added a bunch of chairs in the audience—probably illegally. I found out later that if it hadn't been such a hit, it was a pretty good likelihood the Belfry would have closed."

That initial success literally set the stage for the other six shows in the *Wingfield* series – three of which had their world premiere under Artistic Director Glynis Leyshon (*Wingfield's Progress*, *Wingfield's Folly* and *Wingfield Unbound*), and all of which have graced the Belfry's stage. "We've always had an astonishingly warm reception there – in fact, some people refer to the Belfry as 'Wingfield West'."

When asked for early memories of the Belfry, Beattie doesn't hesitate. "We shared a hallway backstage with the Cool Aid drop-in centre, and Friday and Saturday nights could be a little, uh, dicey. One night I came out to do the second act of the first *Wingfield* show and a man with a very large knife was standing between me and the backstage door – and I'm pretty sure he wasn't a critic." Fortunately, the situation quickly resolved itself when the gentleman in question passed out. "I checked to see if he was still breathing, then just stepped over him and went onstage. He was gone by the time I came back, but I clearly remember thinking, 'They didn't cover this in theatre school.'"



1296 Gladstone Ave Fernwood Square 250.590.7982 Tuesday - Sunday 5pm-9pm



Dinner before the show...night cap after the show...we share the square...stop in!  
belfry ticket holder discounts. [www.cavavictoria.com](http://www.cavavictoria.com)



*Hallelujah!*  
*Kudos to the Belfry Theatre*  
*for staging "Chelsea Hotel"*

**Carole James, MLA**

Victoria-Beacon Hill  
Community Office  
1084 Fort Street

tel: 250.952.4211  
carole.james.mla@leg.bc.ca  
www.carolejamesmla.ca

**P R E S T I G E**  
PICTURE FRAMING ETCETERA

OVER 30 YEARS IN VICTORIA AT 2002 OAK BAY AVENUE  
250-592-7115 • [www.prestigepictureframing.ca](http://www.prestigepictureframing.ca)

*Let us care for your art.*

## Fossil Fuel Free Investing

watchful  
responsive patient  
sustainable  
distinct



In a dynamic interconnected world, there is no simply getting rid of stocks, bonds or investment funds that are unethical or morally ambiguous.

Call us and we can discuss our thoughtful and tough screening process that can help align your values and your investments – and meet your financial goals.

**Call 250 361-2284 or visit [www.smartsustainableinvesting.com](http://www.smartsustainableinvesting.com)**



CIBC  
Wood Gundy

Blue Heron Advisory Group

CIBC Wood Gundy is a division of CIBC World Markets Inc., a subsidiary of CIBC and a Member of the Canadian Investor Protection Fund and Investment Industry Regulatory Organization of Canada. If you are currently a CIBC Wood Gundy client, please contact your Investment Advisor.

# Bravo!

2015-2016 Fundraising Campaign:  
The following individuals have invested  
generously to raise funds in support of  
ongoing Belfry Theatre Operations.



**Director's Circle: Godsend (\$10,000+)**  
Patrick Stewart  
Anonymous (1)

**Director's Circle: Production Sponsor (\$5,000 - \$9,999)**  
Anne McLaughlin Fund †  
Anonymous (1)

**Director's Circle: Artist Supporter (\$2,500 - \$4,999)**  
Eric & Lee Adler \*  
Dr. Perry & Annamaria Bamji  
Rob & Shirley Hunter  
In memory of Jean Elizabeth Kódar  
Claude & Joan Murry  
Catherine & John Windsor

**Director's Circle: Member (\$1,200 - \$2,499)**  
Ian & Gloria Back Fund †  
Sherri Bird & Bill Bird  
Stephen & Michelle Brown  
Katherine Farris & Kit Pearson  
Barbara Greeniaus & Bill Israel  
Ivan Habel  
Philomena Hanson  
Fiona Hunter  
Helen Lansdowne  
Lillian McKimm  
Robert Milne  
Patricia O'Brien & Michael Gaudet  
Joan Peggs  
Barbara & Kim Potash  
Paul & Susan Siluch  
Lee & Karl Soberlak Foundation  
Andy Stephenson \*  
Susan Stevenson & Bruce McGuigan  
John & Suzanne Stewart  
Dr. Stephen Tax  
Anonymous (1)

**Disciple (\$1,000 - \$1,199)**  
Eric & Lee Adler  
Susan & Gary Braley  
Eric & Nora Clarke  
Mary Jane Derksen  
Commodore & Janice Drent  
Terry & Leslie Farmer  
Brian & Susan Findlay  
David Harris Flaherty  
Mohan & Kathy Jawl  
Robert & Devi Jawl Foundation  
Elizabeth McPherson Fund for the Arts †  
Bill & Maurcen Murphy-Dyson  
Shelagh & Brad Rinald  
Gordon & Grace Rogers  
Ian Rye & Melina Boucher  
Robert & Joan Snowden  
Frank & Moira Somers  
Avril & Bob Tyrrell  
Anonymous (2)

**Adherent (\$500 - \$999)**  
APM Fund for the Arts †  
Tom & Nancy Bailey  
Adrienne Betty  
Harry & Beryl Borris \*  
Chris & Mary Chapman  
Donna Christie & Richard Shapka

Leslee Farrell  
Eric & Michele Fretz  
Georgia Gibbs  
Carol A. Gray  
Bob & Sara Harman  
Joe & Linda Harvey  
Jean Horowitz  
Bruce & Barbara Houser  
Andrew Karwowski & Sylvie Cote  
Patti-Anne & Martin Kay  
John & Anne Keay  
John Krich  
Mark F. McLean  
Robert Mitchell & Eloise Spitzer  
Michael Morres  
Michael Olson  
Ronald & Judith Parish  
Cindy Petrowski & Phil Marsh  
Edwin & Carmen Pitcher  
Ronald & Juliana Polstein  
Pauline Price  
Provincial Employees  
Community Services Fund \*  
Mary-Ellen Purkis  
Mary Scobie & Paul Boughen  
Judy Stewart  
Robert Thomson  
Patricia M. Young

**Advocate (\$150 - \$499)**  
Marianne Alto  
William & Marlene Anderson  
Kenneth & Sylvia Austin  
Douglas Baer  
Gordon Barefoot  
Sylvia Bews-Wright & Art Wright  
Christine & Michael Bloomfield  
Darralyn Bonnor  
Peter Douglas Bray  
Elizabeth Bridger  
Monty & Nancy Bryant  
Sherry & John Butler  
Jane Butler-McGregor  
Rod Carrow  
Ida Chong  
Adelle Clements  
Jane Clinckett  
Darlene Elaine Clover  
Chris & Susan Considine  
Barbara & Les Copley  
Ron Cox & Bev Suzuki  
Ross Crockford & Jennifer Wise  
Judith & Donald Daly  
Pat Davey  
Oksana Dexter  
Milus Douglas  
Donna Dupas  
John Dutton  
Lawrence Eastick  
Ross & Faye Eddy  
Rita Estock  
Bob & Sylvia Fair  
Carol & Ron Fedrau-Ens  
Jean Field  
Malcolm Foy  
Marguerite Friesen  
Helen Gans  
Ann Geddes  
Peter & Beverly Gibson  
Geoff & Linda Giles  
Debbie Gill & Stephen Cushing  
Leslie Glazier  
Daphne Goode  
In Memory of Len Graves  
Ian & Lesley Hammocks  
Glen Hammond & Catherine Scott  
Alan & Dianne Hanna  
Chris & Catriona Harker  
Anne Holtzman & Gordon Philippe

John & Elaine Hooper  
Katrin Horowitz & Andrew Croll  
Helen & Ted Hughes  
Walt & Lynda Hundleby  
William & Joan Huzar  
Audrey Johnson  
Sydney Kalef  
Kindred Spirits Veterinary Hospital  
Bruce & Gwyneth Kingham  
Alina Maris Krogstad  
Peter Kruselnicki  
Lois Lacheur & Derek Whittle  
Marry Laurence & Mort Nelson  
P. Leslie & S. Boies  
Glynis Leyshon & Richard Brownsey  
Allana Lindgren  
Dan MacDougall & Karen McDiarmid  
Bruce & Nikki MacKenzie  
Warren Magnusson & Sharon Walls  
Ken & May Mah-Paulson  
Margaret Mair  
Peter & Helen Malcolm  
Robert & Lynda Malpass  
Jessie Mantle  
Margaret Martin  
In Memory of Shurly Mazerolle  
Helen & Dan McAllister  
Mary McAvoy  
Terence & Ann McMullen  
Lois McNabb  
Michelle Morris  
Bill & Celine Neilson  
Kelvin & Elisabeth Nelson  
Rob & Carol Nelson  
Beate & Kirk Northcott  
Margie Parikh & Lonn Friese  
Marie Peach  
Julie & Bill Pearce  
Carol & Emily Prowse  
Adrienne Radford  
Murray Rankin  
Jaci Ross  
Ann Saddlemyer  
Barbara J. Scott  
David & Jean Screech  
Don Shaw  
C. Stephen & Mary Smith  
Linda Stead  
Michael Stewart  
Nalini & Tim Stewart  
Sandra T. Stott  
Leonard & Valerie Stubel  
Ken Thornicroft  
Jeanette & Stephen Titus  
Anne Topp  
David & Dorothy Torontow  
Michael & Anne Tyler  
Thomas & Diana van Cleave  
Nick & Carmel van Der Westhuizen  
Gordon & Deanna Wallace  
Donovan & Maryla Waters  
Dennis Watts & Cilla Brooke  
Robert Weyant & Marsha Hanen  
Jane Whiteley  
George & Monika Winn  
Anonymous (15)

Our thanks to the 69 Believers  
(\$75 - \$149)  
and 126 Friends (up to \$74).  
A special thank you to the ten donors  
we know of who have made bequests  
to the Belfry Theatre.  
As of September 30, 2015  
\*\* New Donor  
\* Donor moved up a category since  
last show  
† Through the Victoria Foundation

## Bravo!

The Belfry Theatre gratefully acknowledges the financial support of The Canada Council for the Arts, the Government of Canada, the Province of British Columbia through the British Columbia Arts Council and the Gaming Policy and Enforcement Branch, the Capital Regional District Arts Development Office and the City of Victoria.



### 40th Anniversary Season Sponsors

Cook's Day Off  
Helijet  
Thrifty Foods  
Times Colonist

### Show Sponsors

Graham Isenegger & Neil Chappell  
of CIBC Wood Gundy – Blue Heron Group  
The Co-operators General Insurance Company  
Gabriel Ross Furniture  
Hillside Printing  
Munro's Books  
TD Bank Group

### Host Hotels and Accommodation Sponsors

Accent Inns  
The Fairmont Empress  
Garden Oaks Fine Accommodation  
The Magnolia Hotel & Spa  
Villa Marco Polo

### Media Sponsors

Boulevard Magazine  
KiSS 103.1  
FOCUS Magazine  
Times Colonist  
98.5 The Ocean

### Facility and Operations Sponsors

CD Specialty Cleaning & Restoration  
Costa Verde Landscaping  
Dowell's Moving & Storage  
The Finishing Store  
KPMG  
Monk Office  
Prism Imaging  
The Soap Exchange

### Hospitality Sponsors

Caffè Fantastico  
Charelli's Delicatessen  
Everything Wine  
Sea Cider  
Spinnakers Brewpub & Guesthouse

### Floral Sponsor

Jennifer Roberts Florist

### Upstage Magazine Sponsor

Fastrac Printing

### Belfry 101 Sponsor

The Joint Pizzeria & Deli

### Booksmack Partners/Sponsors

Greater Victoria Public Library  
Munro's Books

### Crush Sponsors

Boulevard Magazine  
The Cooperators General Insurance Company  
Everything Wine  
Inn at Laurel Point  
KiSS 103.1  
Times Colonist  
98.5 Ocean

### SPARK 2016 Festival Sponsors

CVV Magazine  
Government of Canada  
Hotel Zed

### Foundations

Barnes Family Foundation  
through the Victoria Foundation  
Belfry Theatre Society Endowment Fund  
through the Victoria Foundation  
The Hamber Foundation  
The Leon and Thea Koerner Foundation  
The Stewart Fund  
through the Vancouver Foundation  
Vancouver Foundation  
Victoria Foundation

## Belfry Business Circle

### Gold Business Circle Members:

Orca Book Publishers  
Susan Salomonsson,  
Chartered Professional Accountant  
St. Margaret's School  
Carolann Steinhoff, Queensbury Securities Inc.

### Silver Business Circle Members:

Field & Company LLP Chartered Accountants  
Garside Signs & Displays  
Horne Coupar Barristers and Solicitors  
Jean Medland, Realtor, Pemberton Holmes  
Kane Straith Fine Clothing  
Moxie's Bar and Grill  
Storey's Gate Project Management  
& Construction Inc.  
The Union Club of British Columbia  
Victoria Arts Marketing

We're just getting warmed up.



JAMES EHNES

SIGNATURE SERIES

## Ehnes & Mahler

NOV 21, 8 PM  
NOV 22, 2:30 PM  
ROYAL THEATRE

Tania Miller, Conductor  
James Ehnes, Violin

Renowned violinist James Ehnes joins the Orchestra to play Lalo's thrilling Symphonie Espagnole. Called "the Jascha Heifetz of our day," Canadian Ehnes has played with top orchestras on four continents in the past year. The concert concludes with Mahler's best known symphony which has been described as a symphonic Mt. Everest – grand and exhilarating.

Get your tickets today!  
250.385.6515  
or [victoriasymphony.ca](http://victoriasymphony.ca)

75TH ANNIVERSARY SEASON SPONSOR

WAYNE STRANGLUND AND



FISGARD  
CAPITAL CORPORATION

MEDIA  
SPONSORS



VS 75

Tania Miller, Music Director



Henri de Toulouse-Lautrec, *Le marchand de marrons*, 1897, lithograph, 13.8" x 9.5"



**WINCHESTER GALLERIES**

2260 Oak Bay Avenue 250-595-2777

[winchestergalleriesltd.com](http://winchestergalleriesltd.com)